

# Mi Motion Sensor

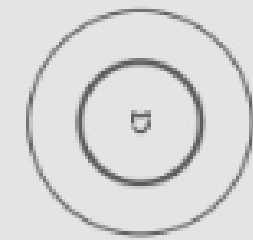
Human/pet activity detection  
Smart link | Unrestricted placement



\* This product needs to be used with devices that have Zigbee gateway functionality, such as Mi Smart Home Hub.

# Smart detection of human or pet activities

Place the Mi Motion Sensor near the TV, door, and bed and it will connect to and control other smart devices when it detects human or pet activities. A small sensor is all you need to make your life easier.



Mi Smart Home Hub

+



Mi Motion Sensor



## Automatically switches off home appliances

You can set a specific time period during which the Mi Motion Sensor will automatically connect to and switch off lights and other home appliances if no human activities are detected.

\* The home appliances need to be connected to the Mi Home/Xiaomi Home app or Mi Smart Plug in order for the automatic switch-off function to work. Both need to be purchased separately



## Pet monitoring

The Mi Motion Sensor can send a message to your mobile phone if your dog/cat slips out of the house.



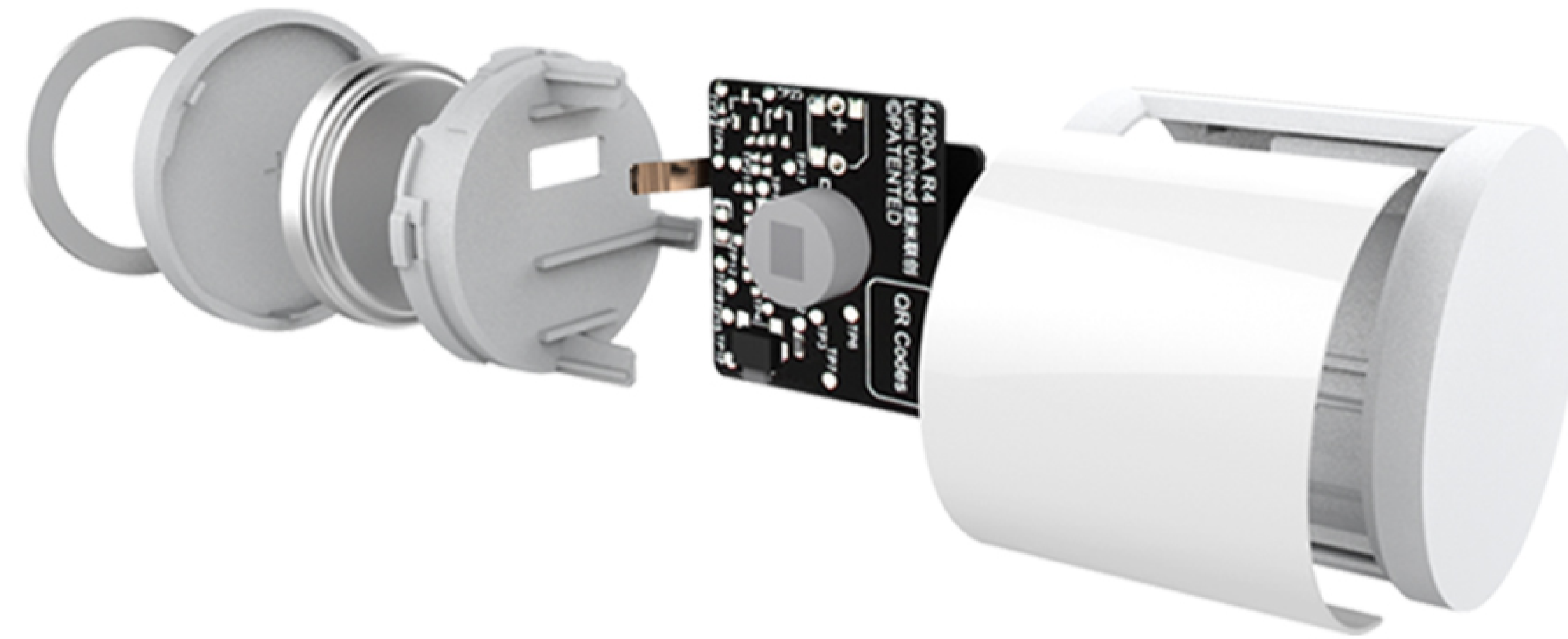
# Smart detection of human or pet activities





## Premium quality and superb craftsmanship

The Mi Motion Sensor uses a pyroelectric infrared sensor and accurately determines the human or pet movement by sensing the movement of heat sources. The lens is made of polyolefin materials and has high detection accuracy. The corrosion resistant process enables the housing to withstand humid weather and avoid discolouration after long periods of use.



## Mi Smart Home Solutions

Discover even more uses with other Mi Smart Home devices

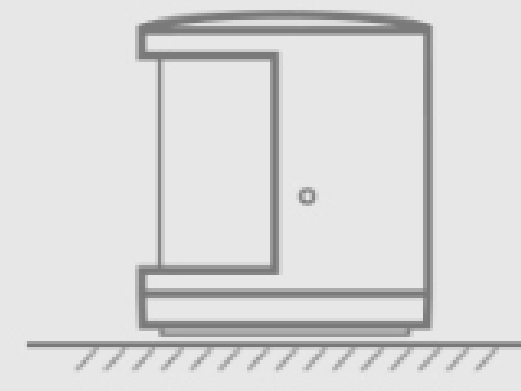




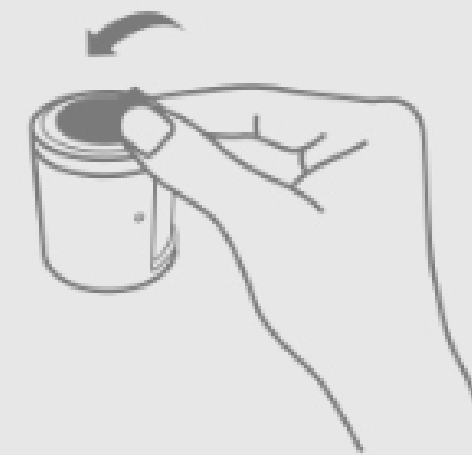
# Simple installation

## Method 1

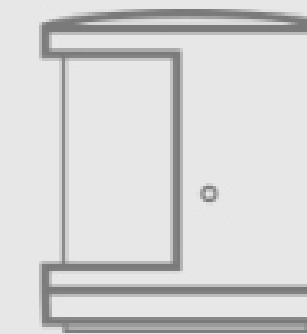
No adhesive is required and you can simply place it wherever you want



## Method 2



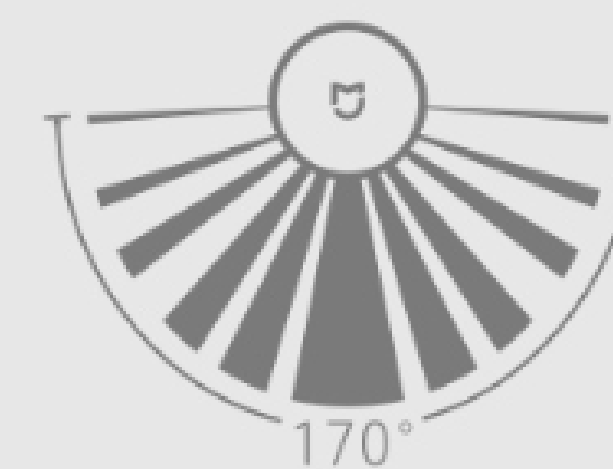
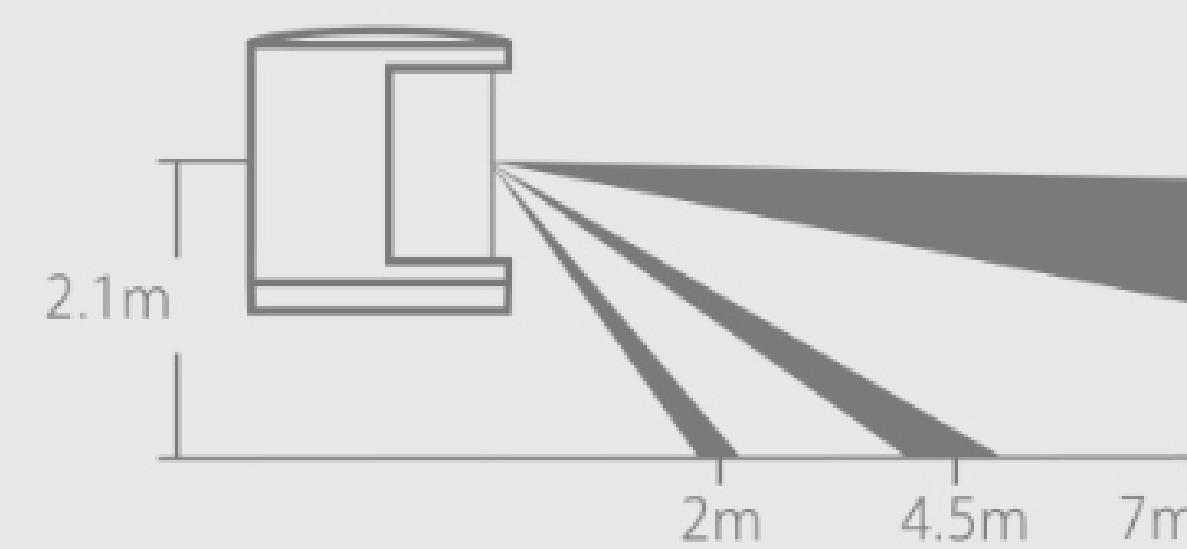
1. Tear off the protective film of the adhesive



2. Adhere it to the desired place

\* It is recommended to install the sensor at a height of 1.2–2.1m. If installed at a height of less than 1.2m, the sensor will still work but the detection range will decrease. If installed at a height of above 2.1m, the sensor may have a blind area beneath it and may not be able to detect certain areas. tetapi jangkauan pendeteksiannya mungkin berkurang. Jika dipasang pada ketinggian di atas 2,1 m, mungkin ada area di bagian bawah sensor yang tidak terdeteksi dan mungkin tidak dapat mendeteksi area tertentu.

\* When installing, make sure that the lens is directly facing the area to detect. Place or adhere the sensor to somewhere as close as possible to the edge of the desk/cabinet.



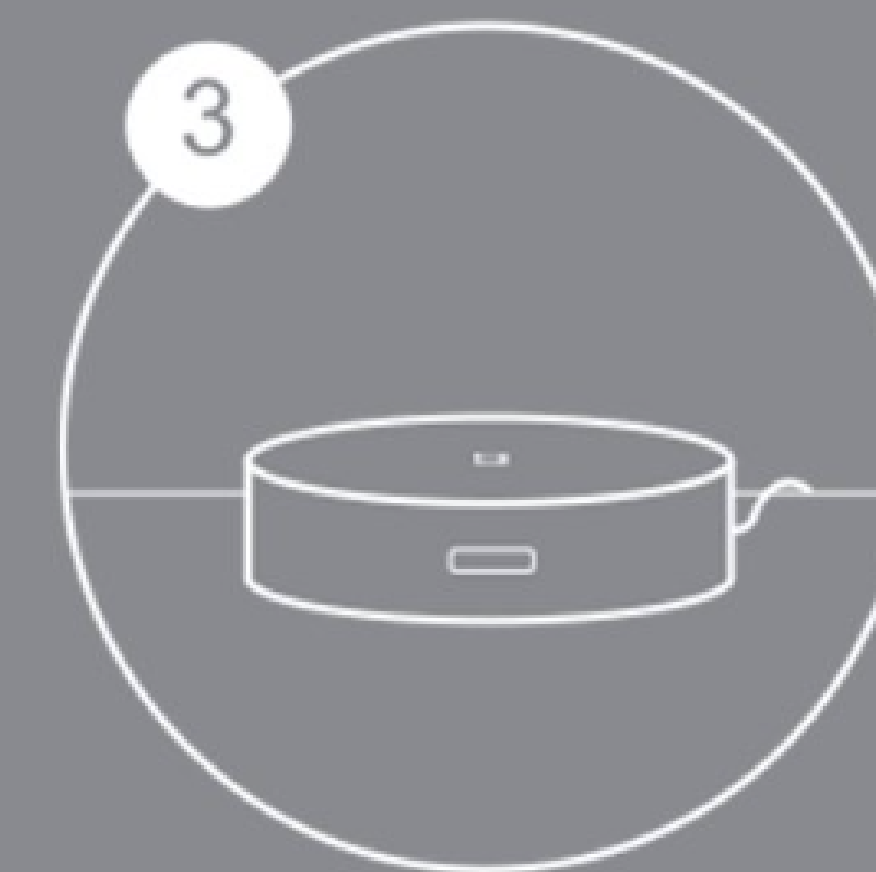
# Simple installation



1 Open the Mi Home/Xiaomi Home app and tap "+" in the top right corner to add the Mi Motion Sensor



2 Follow the instructions on the page to add the device to the Mi Smart Home Hub



3 The hub will give off two long beeps after the device is added successfully