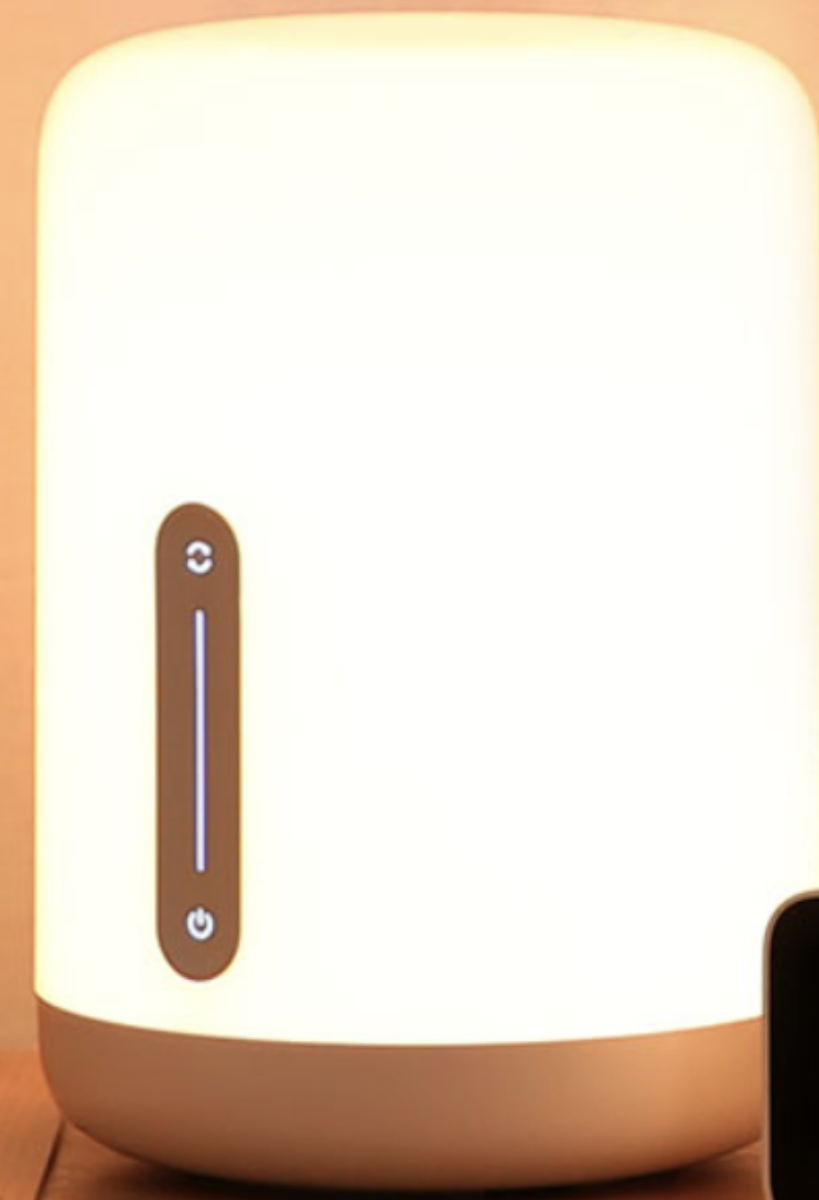


# Mi Bedside Lamp 2

Let your whole room be filled with soft light

More bright spaces | Bright and soft light | night light | Intelligent Voice Control



## Brighter and more practical full-body lighting design

Unlike traditional designs, this second generation lamp uses an advanced reverse cast and auxiliary heat dissipation design to allow light to diffuse through the entire lamp body.\* Fill your entire room with soft light to create a pleasant and warm atmosphere or to brighten the room for everyday use.



# A better lighting experience both day and night

With up to 400 lumens of brightness, the lamp can easily light up a typical bedroom. With a minimum brightness of just 2 lumens, the lamp can also be a useful night light to help you sleep peacefully.

## wake up ready for the day

Mi Bedside Lamp 2 allows your body to follow its natural daily rhythm, similar to waking up at sunrise.



morning  
wake up



Setting the  
power  
on/off time





## sleep peacefully

The lowest brightness of 2 lumens is enough to relax your mind without interrupting your sleep.



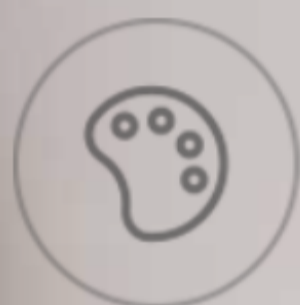
delayed  
shutdown



sunset sleep  
aid

## Create a warm atmosphere

Enjoy the gentle light of Mi Bedside Lamp 2 while reading your book comfortably and use the touch controls for a seamless experience that makes you feel comfortable at home. Get a purer lighting experience that's brighter, better-looking, and easier to use.



Color control



Color temperature control (1,700-6,500 K)



brightness control



color cycle



# Light mixing technology to create a perfect night atmosphere

Set the right tone with a premium bulb combined with dual-layer light mixing technology.  
Multicolored light is mixed evenly to create the perfect atmosphere for the night.

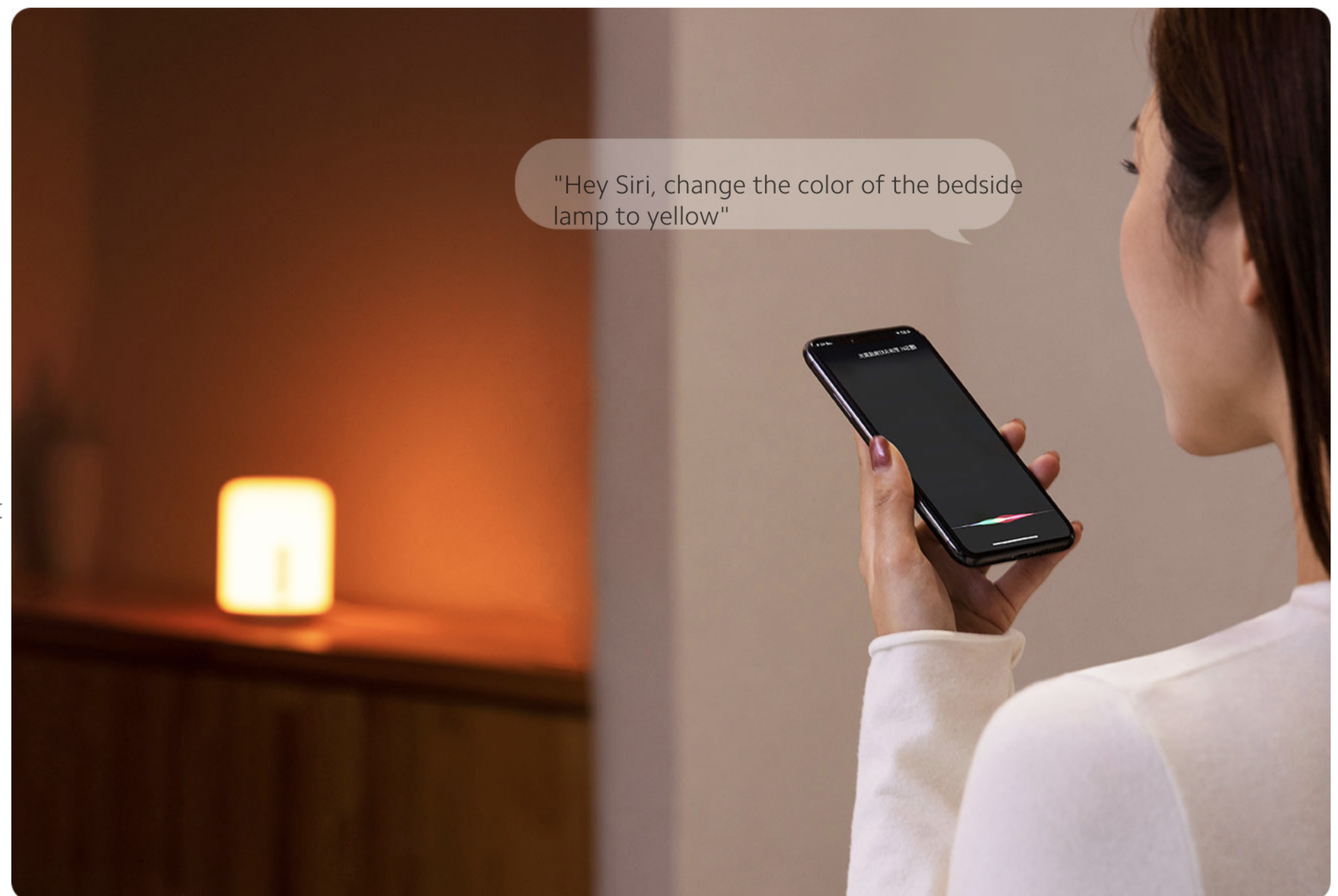
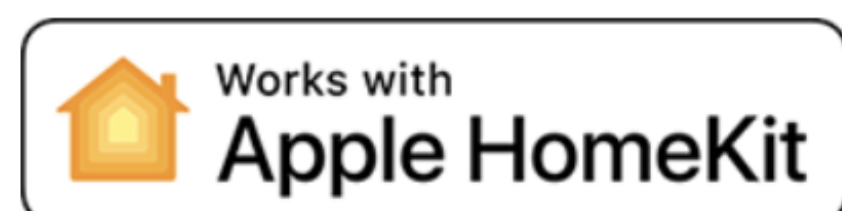


## Control your lamp in multiple ways

It connects to both Apple HomeKit and Mi Home app. It can be connected to other smart devices and even controlled with Google Assistant or your Amazon Alexa. Thus, it fully integrates into your personalized smart home experience. The possibilities are only limited by your imagination.

### "Hey Siri, change the color of the bedside lamp to yellow"

Available with Siri and home apps on iPhone, iPad, Apple Watch, Mac computers. Control the product with one touch, voice or automation for a simple and secure experience.



Quickly connect to Mi Home app to enable remote control and smart home connectivity



Mi Home app control



Smart Mi Home link

## Intuitive touch controls Swipe to adjust settings

Tap anywhere on the slider to turn on the product when the lamp is off. So you can easily turn on the light in the dark. No more searching for the light switch in the dark



Tap to change lighting  
Long press to change  
modes



Swipe up and down to  
adjust brightness



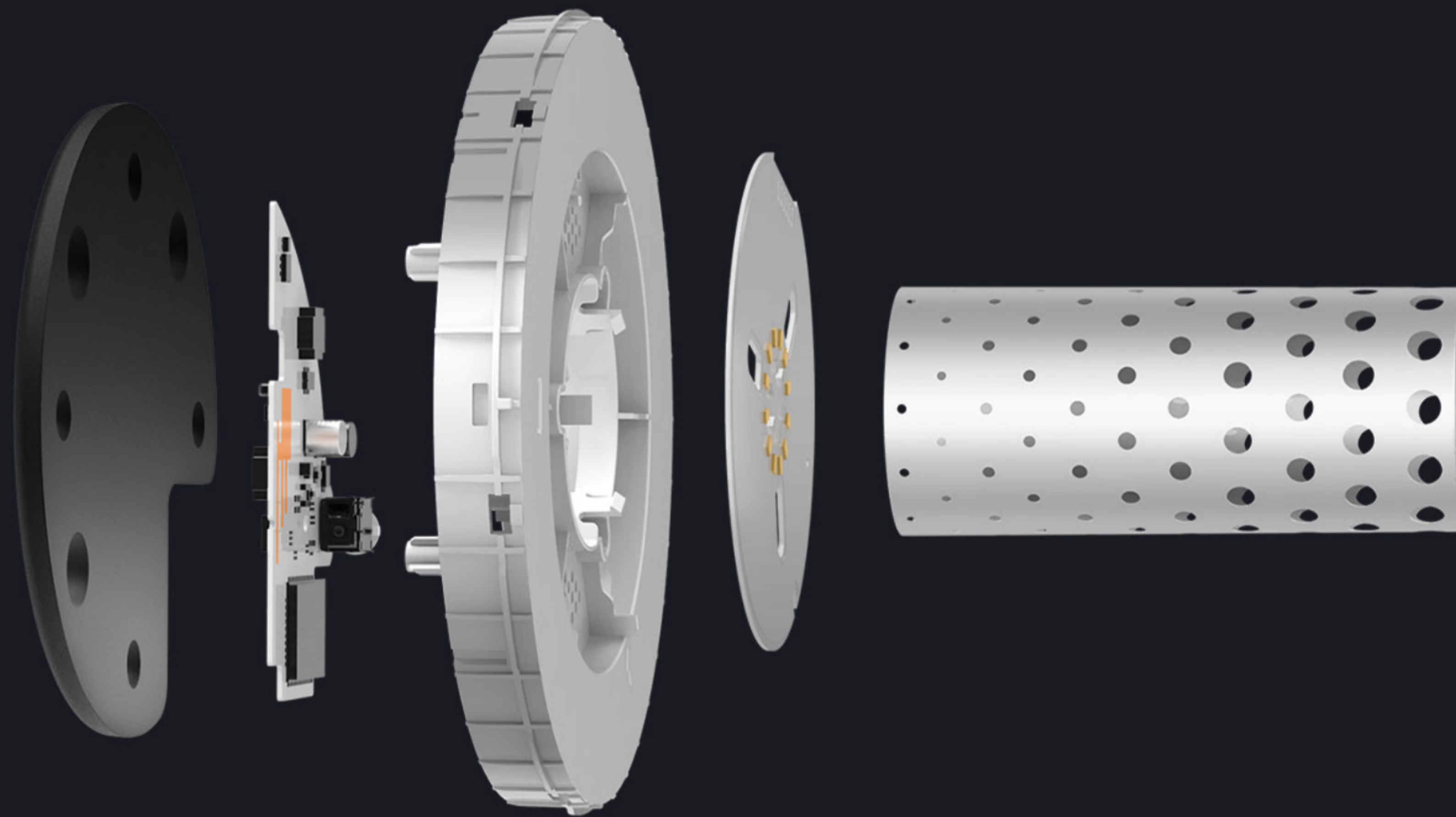
Tap to turn on/off  
Long press for delayed  
shutdown





## A carefully designed masterpiece

The special optical structure and color mixing method creates a warm and gentle light that allows the lamp to blend easily into your home.



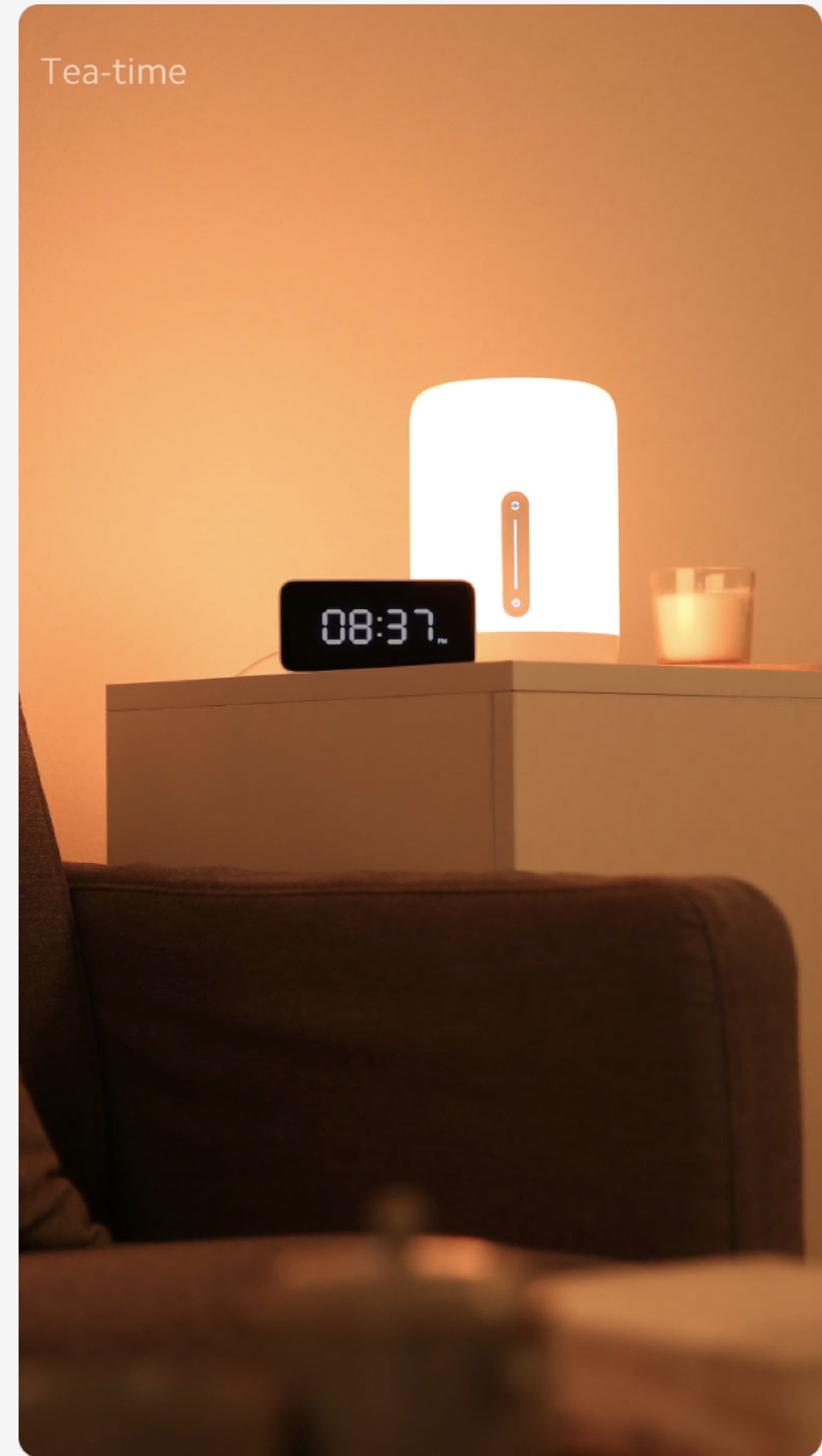
daily brightness



meditation blue



Tea-time



rest and relaxation

