

King Smith WalkingPad treadmill R1

A revolutionary folding treadmill.





—
180 ° Folding



—
Simple storage



—
Running together



—
Speed control



—
Brushless motor



—
Interconnection

Aesthetic design, walking and running features integrated onto a single WalkingPad

When the handrail is upright, the WalkingPad transforms into a running machine; when the handrail is lowered to the treadmill, the WalkingPad transforms into a safe walking machine.



Handrail up
Running

Handrail down
Walking mode



R1

Upright Storage

0.2 m²

Floor area

15cm

Thickness

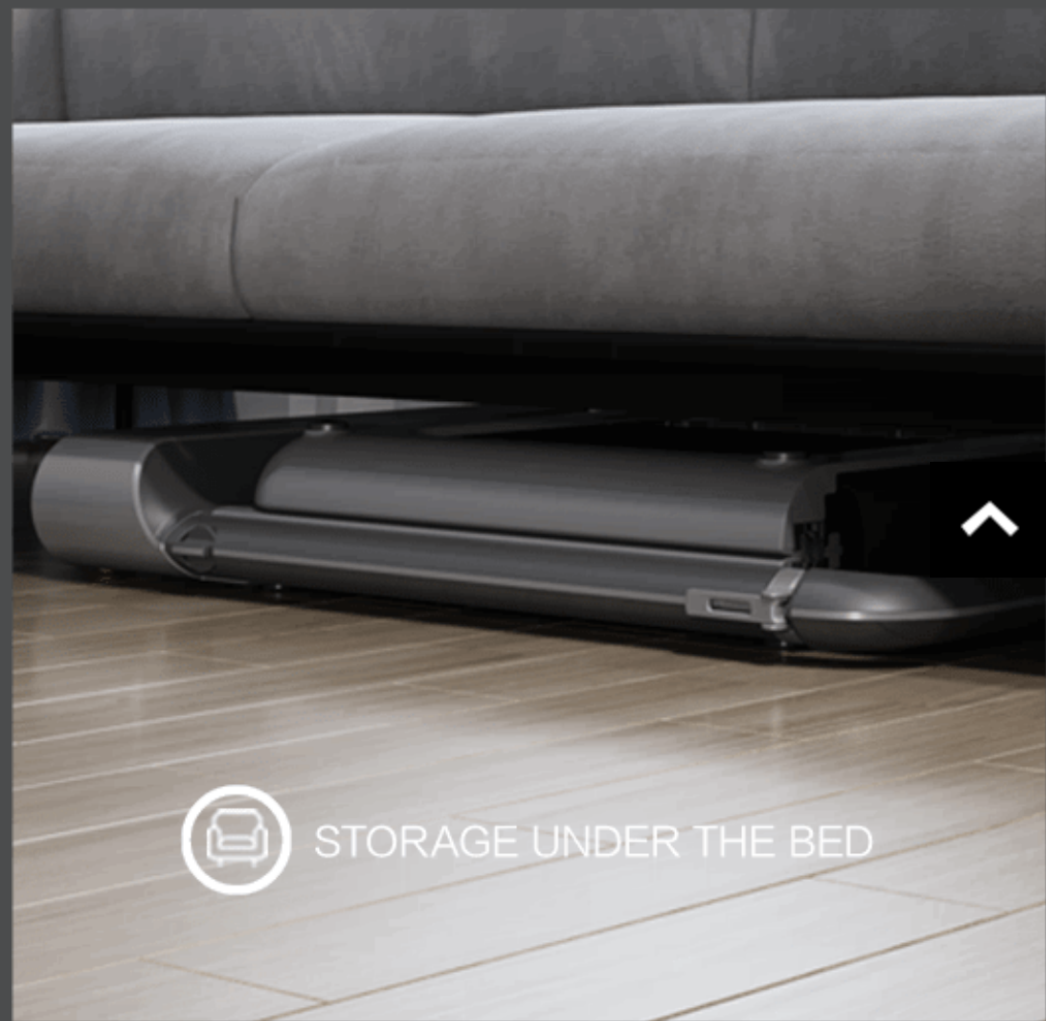


Space-saving

barrier-free



STORAGE UNDER THE BED



STORAGE UNDER THE BED

Versatile, ideal for the office

It may be stowed beneath the desk with the handrail retracted. You may exercise while working, which helps you break the habit of being sedentary during the day.



Beautiful and long-lasting frame

The R1 frame is constructed from a single piece of lightweight and sturdy aluminum alloy.

440 MM

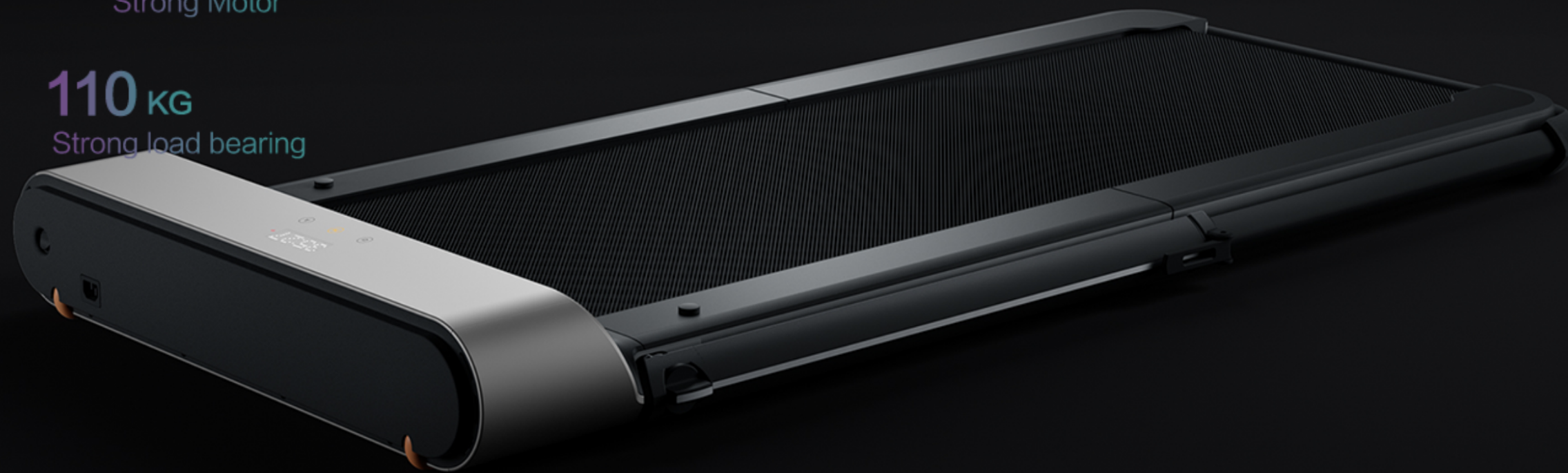
Wide running platform

125 HP

Strong Motor

110 KG

Strong load bearing





The low-noise brushless motor lets you to enjoy your exercise in peace.

It is equipped with a new brushless motor that produces less noise and has a higher load-bearing capability; after extensive testing, it has shown to be steady and reliable.



Repeated optimization creates a nice sensation in your foot.

The R1 frame is constructed entirely of a single-piece aluminum alloy that is lighter yet more robust.

Running belt - it is durable and non-slip; your foot will feel secure when you run.

Smooth layer - it offers users less friction, more stable operation.

EVA soft layer - its supple and flexible properties absorb shock and protect the knees.

High-density fiberboard - its sturdy and lasting characteristics contribute to a safer running experience.



Three control options ensure a simple operation.

In walking mode, R1 has three control options. In 'M' mode, the speed may be modified through the remote control; in 'A' mode (for walking mode only), the speed can be adjusted based on the position of the step. Additionally, the KS Fit App is an excellent alternative for mode selection and operation.



Foot-sensing control



The remote control



APP control



Simpler and more secure

Our goal is to guarantee the safety of walkers and their families. We continually verify every aspect to guarantee that each user quickly becomes familiar with R1 and can use it more comfortably and safely.



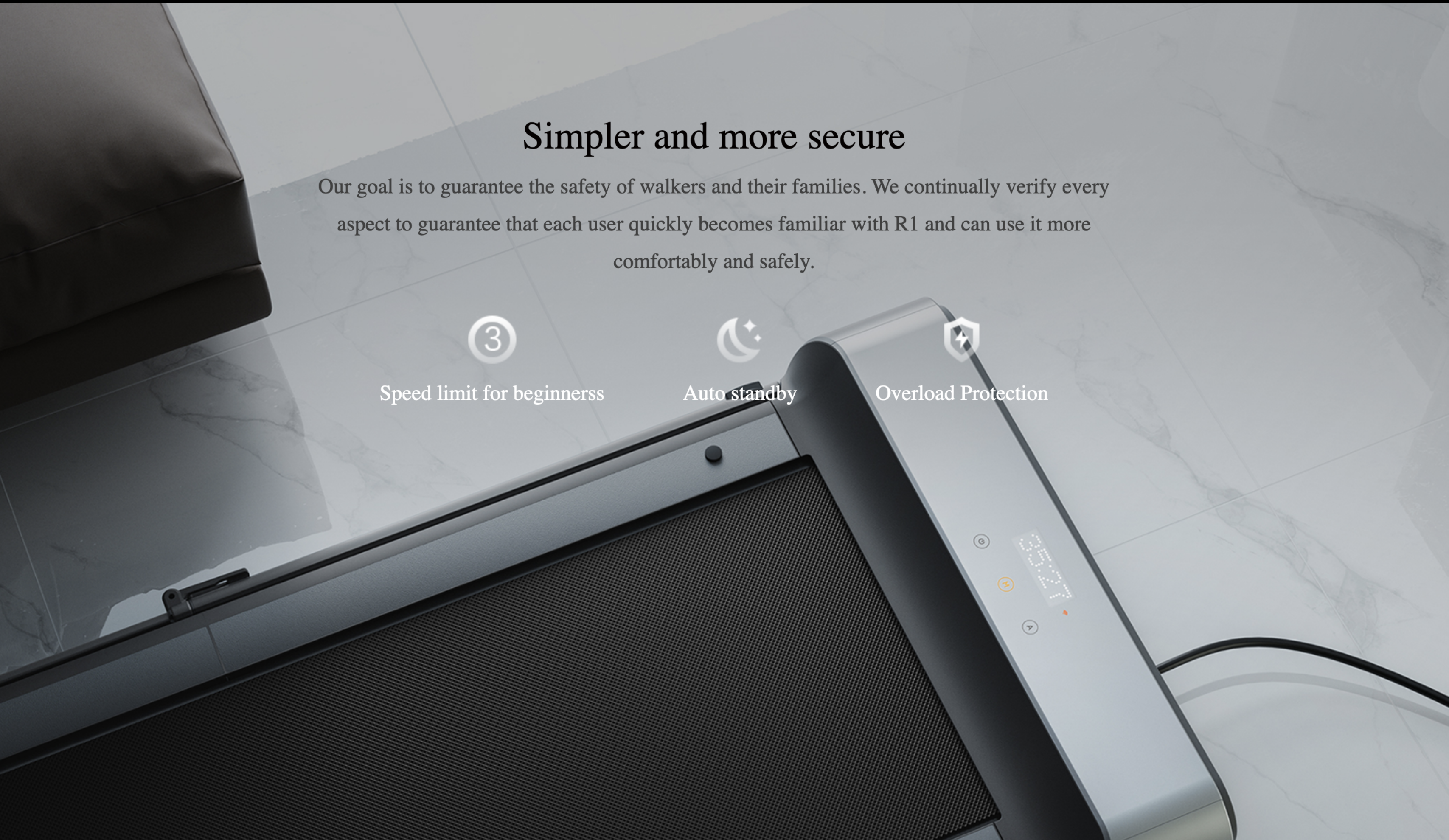
Speed limit for beginners



Auto standby



Overload Protection



Technical Parameters



Product Name: King Smith WalkingPad R1 Pro Treadmill

Platform height: 77mm

Product Model: R1

Speed Range: 0.5-10km/h

Unfold Size: 1500 × 720 × 900mm

Maximum Load: 110kg

Fold Size: 980 × 720 × 155mm

Net Weight: 38 kg

Color option : Silver

Gross Weight: 33 kg

Panel Process: IML

WalkingPad * 1 Power Cord * 1

Panel Display: Dot matrix + Touch button X3

Remote Control * 1 Remote Control Lanyard * 1

Motor: Brushless

Allan Wrench * 1 Silicon Lubricant * 1

Motor Power: 1HP

Running Belt Specifications: 440mm



Power Cord



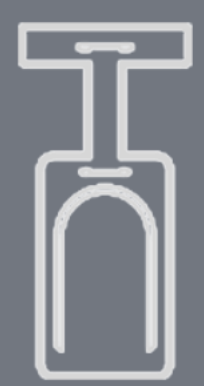
Remote Control



Remote Control Lanyard



Allan Wrenchd



Safety Key



Silicon Lubricant



Specification