

Xiaomi Smart Doorbell 3

Ultra-clear 2K resolution, watches over your door and home

Real-time monitoring | Doorstep motion notification |
Extra-long 4.8-month battery life | Ultra-wide angle





Ultra-clear 2K resolution



AI human recognition



5200mAh battery



Free cloud storage*



Electronic chime included



Two-way audio



Worried about missing friends' visits?



Worried about criminal activity?



Worried about losing delivered packages or take-outs?

24-hour smart motion detections Automatic video recording of movements and notification to your phone

Equipped with human body sensor and AI human shape recognition technology, Xiaomi Smart Doorbell 3 monitors abnormal movements of your doorway, and sends notifications to your smartphone once they are detected.



Real-time monitoring A doorbell that's also a monitor

Low power-consumption and fast wake-up technologies save more energy in standby mode. Supports remote doorbell wake-up and remote viewing of the doorway via a smartphone anytime and anywhere.



Two-way audio communication, smart voice changer

Peace of mind even when home alone

When someone rings the doorbell, you can view them in the doorway and communicate with them via your smartphone. Supports voice changer to protect your privacy.



Original voice



Clown voice

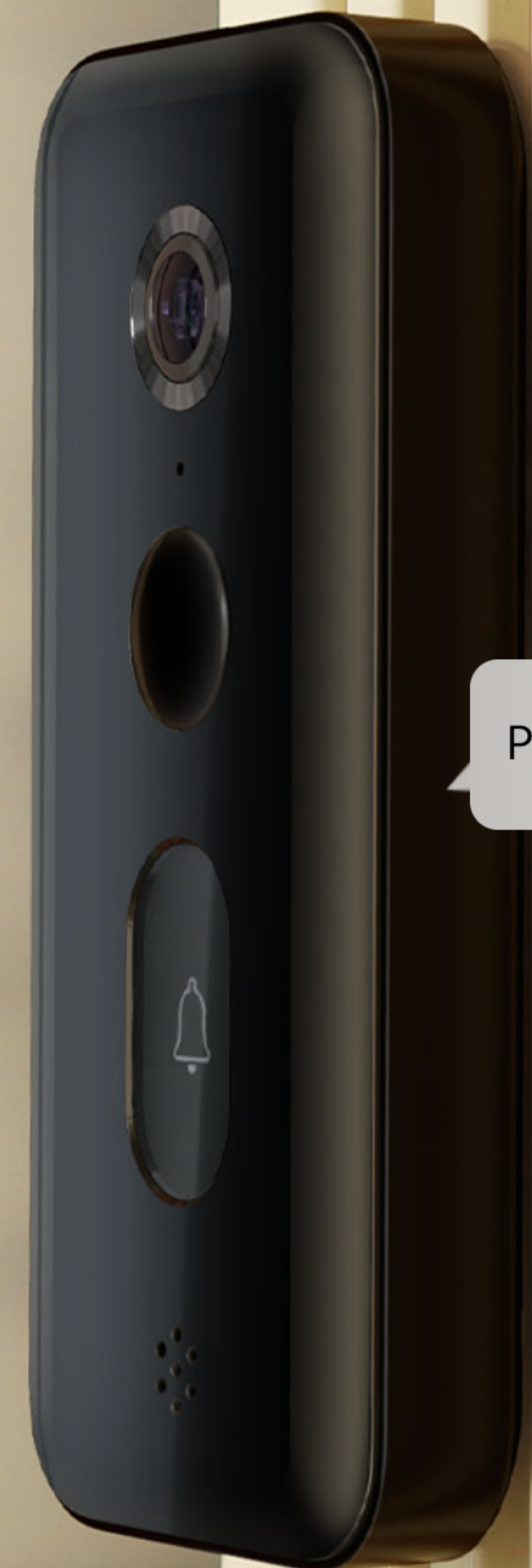


Old man voice



Support for personalized settings with customized auto reply

Record a fun welcome message and have it play automatically after a visitor presses the doorbell



Please wait a moment

See more with the diagonal 180° ultra-wide view*

The new-generation ultra-wide-angle lens increases the vertical angle to 107°, to ensure clear, panoramic monitoring of the entire area in front of the door.



Xiaomi Smart Doorbell 2



Xiaomi Smart Doorbell 3

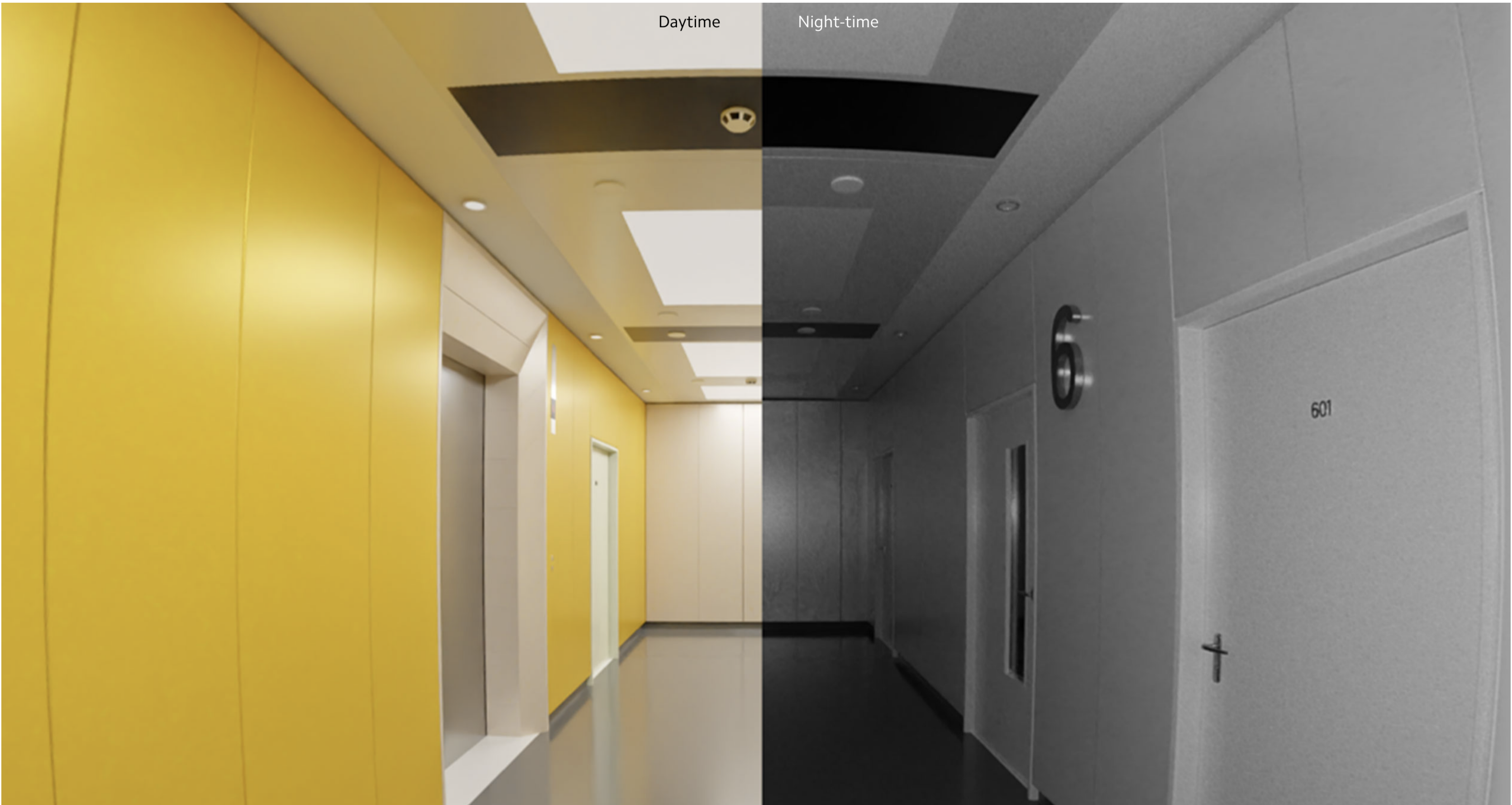


Ultra-clear vision with 2K resolution View the doorway in more detail

Image quality is further upgraded with 2K resolution for higher quality image capture, not only ensuring good viewing results, but also clearer and more detailed recording of doorstep activity.

Clear video even in the dark

The 4 built-in 940nm high-power infrared lights* ensure the images are captured clearly even in low or no light.



**Upgraded battery life
Only needs charging 3
times a year***

The built-in 5200mAh high-capacity lithium battery further improves battery life, so there is no need for frequent charging and battery replacement. The USB Type-C charging port enables faster and easier charging*.

5200 mAh

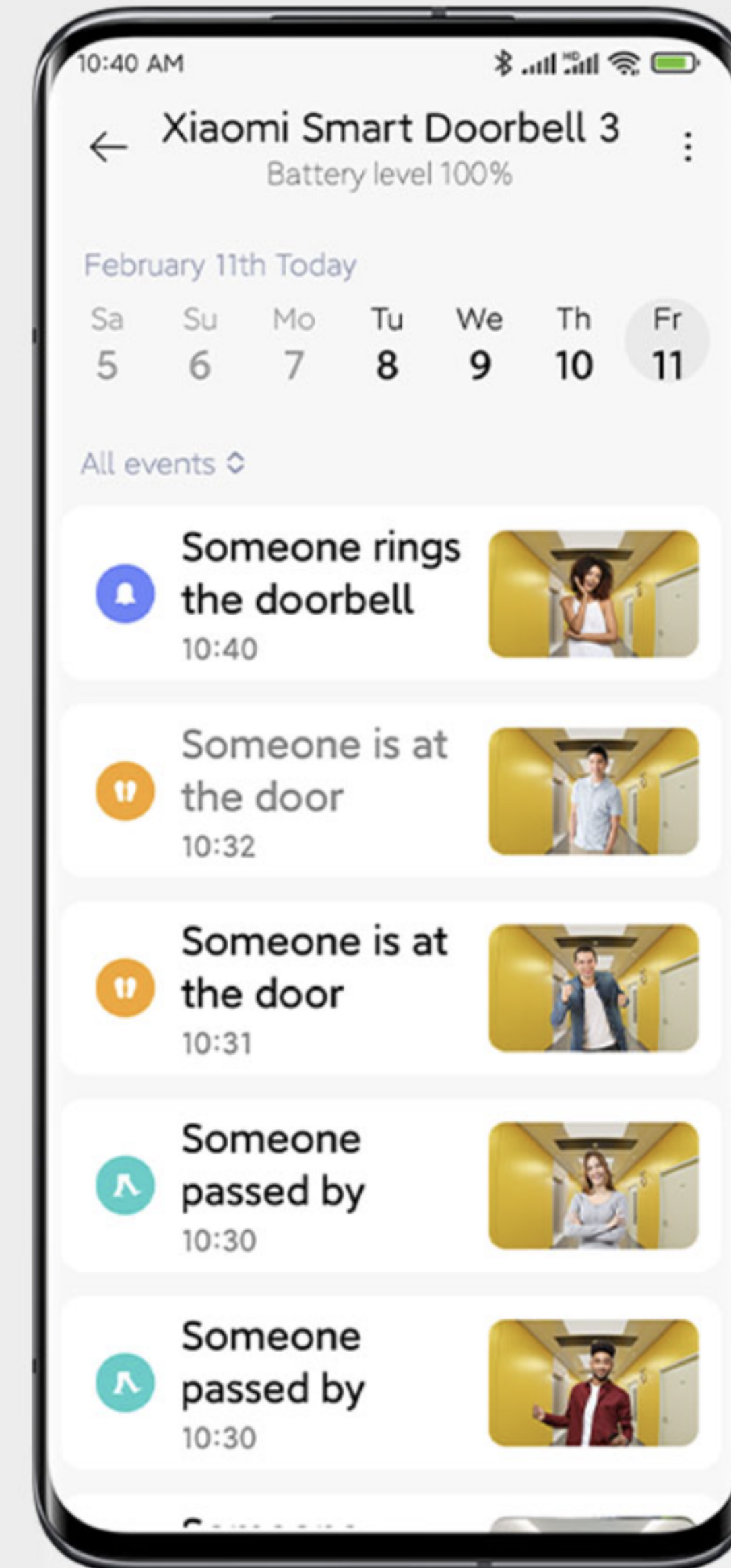


Free, rolling 72-hour cloud storage of motion-triggered video clips

Watch videos recorded in the last 3 days for free without purchasing a memory card or subscribing to cloud services, and check motion alert recordings anytime and anywhere.



72-hour cloud storage



High-volume wireless chime Rings even when disconnected from the Internet

With 4 volume settings to choose from, the standard high-volume indoor chime can be heard clearly in noisy environments. "Do not disturb" mode mutes the chime when you don't want to be disturbed.

79 dB
Maximum volume



Multiple theft prevention

Forced removal alarm + powerful 3M adhesive + screw fixing + one to one account pairing*.
When the doorbell detects that it is being removed, it will trigger an alarm, record video and send a notification to your phone.



Forced removal
alarm



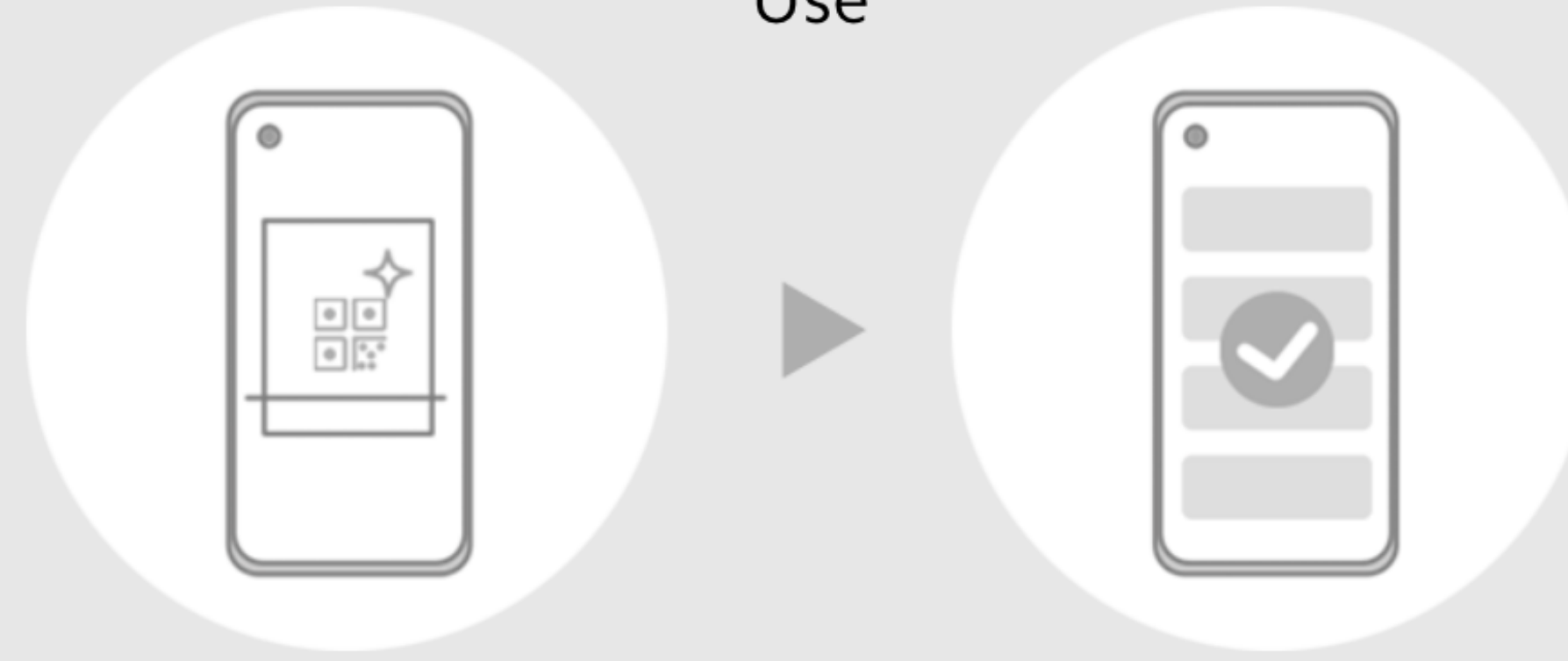
Powerful 3M
adhesive



One to one account
pairing

Easy to use

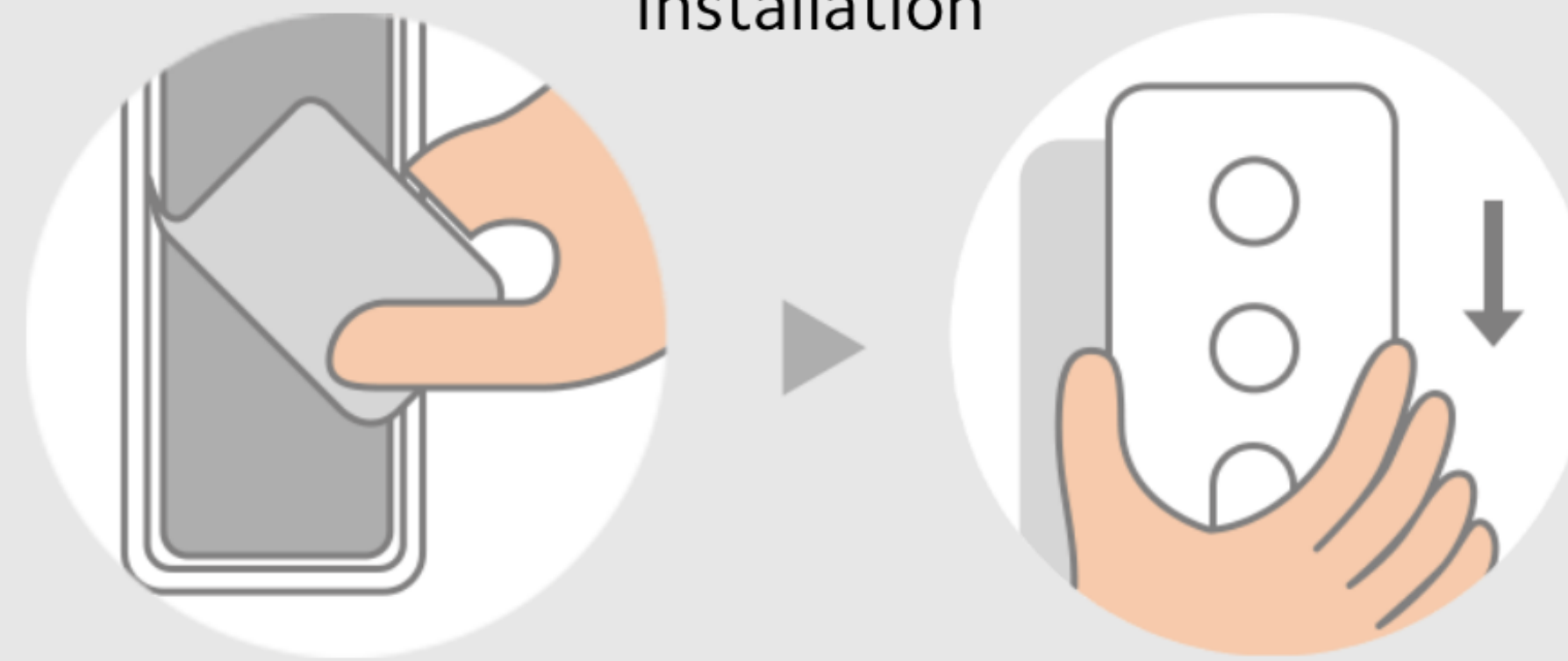
Use



1. Scan the QR code on the back of the doorbell with the Mi Home/ Xiaomi Home app

2. Follow the prompts to complete pairing

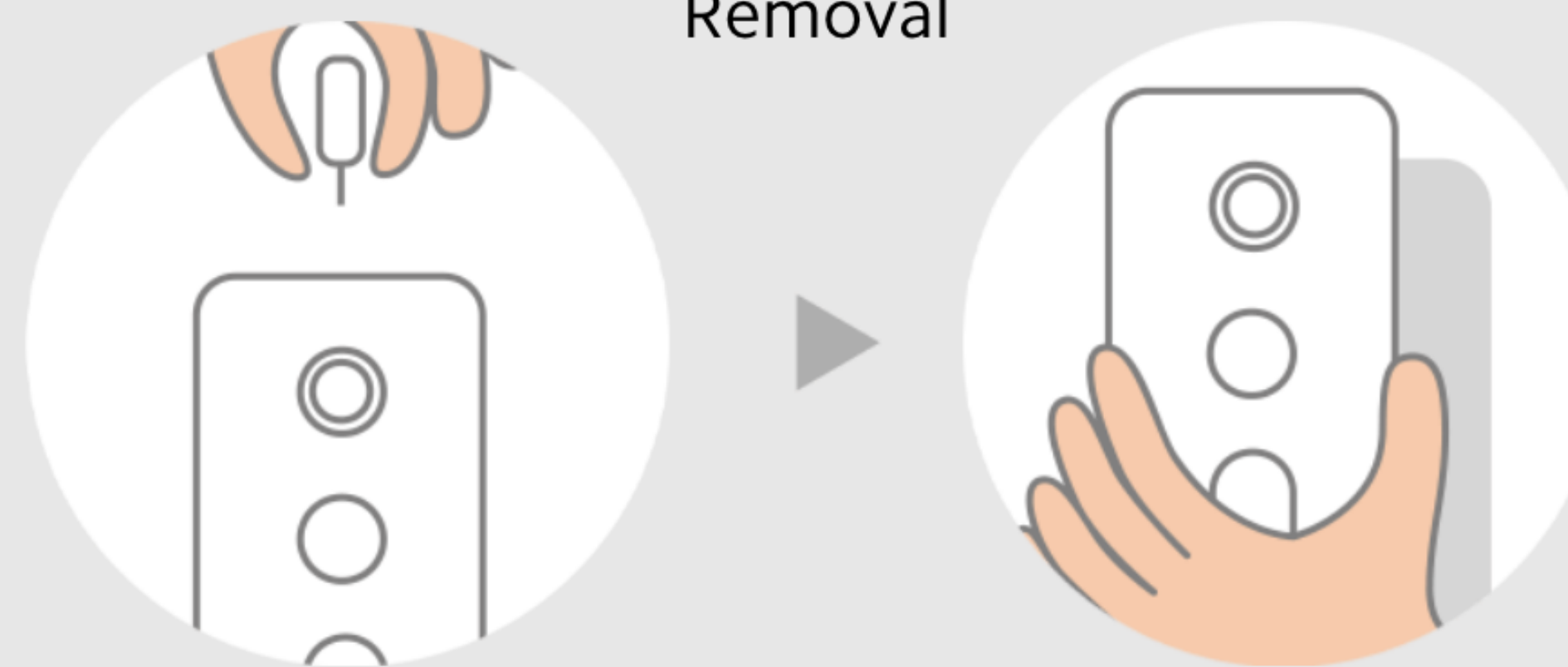
Installation



1. Use the double-sided adhesive on the back of the mounting base to affix the mounting base to the door

2. Snap the doorbell onto the mounting base

Removal



1. Insert the removal pin into the removal hole and slide the doorbell upwards to remove it

2. Use the supplied Type-C power cable for charging

*This product is not waterproof and should not be used in outdoor environments.

*Free cloud storage: 3-day rolling cloud storage means that the camera records videos on a rolling basis. Each video will be stored on the cloud for 3 days and be deleted after that.

*940nm high-power infrared lights: 940nm infrared light is invisible.

*Only needs charging 3 times a year: Battery life and battery data are from MadV laboratory. The standard capacity of the battery is 5200mAh. Under laboratory conditions, the doorbell was usable for 4.8 months in standard mode, at normal temperature (25°C) and pressure, with 20 10-second videos taken every day without other operations. Battery life and capacity may vary slightly due to individual product difference, service environment and other factors.

*Volume data measured at a distance of 50cm in a laboratory environment. Results during actual use may differ slightly due to individual product differences and environmental factors.

*The doorbell and user account are paired one-to-one on the Cloud server. Even if the doorbell is forcibly removed and stolen, no one can pair with or use your doorbell.

*Affix the doorbell onto the door using the 3M adhesive on the mounting back plate, or using screws. Please refer to the manual for the specific method.